



SERIE

K

CILINDRI COMPATTI
COMPACT CYLINDERS

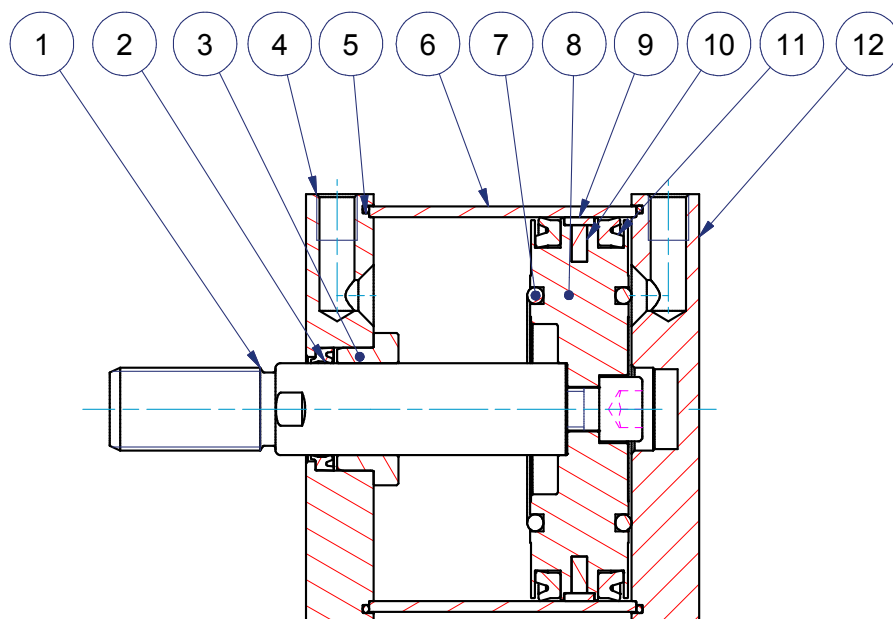

ARTEC[®]
PNEUMATIC COMPONENTS

CARATTERISTICHE TECNICHE - TECHNICAL CHARACTERISTICS

Pressione di esercizio <i>Working pressure</i>	1 ÷ 10 bar (doppio effetto - <i>double acting</i>) 2 ÷ 10 bar (semplice effetto - <i>single acting</i>)
Temperatura di esercizio <i>Working temperature</i>	0 ÷ +80°C (-20°C con aria secca - <i>with dry air</i>) 0 ÷ +150°C (con guarnizioni per alte temperature - <i>with high temperature seals</i>)
Versioni - Versions	semplice effetto (molla anteriore) - doppio effetto - antirotazione - stelo passante <i>single acting (front spring) - double acting - anti-rotation - double rod</i>
Alesaggi - Bores	∅ 125 - 160 - 200 - 250
Corse - Strokes	vedere tabelle corse standard - <i>see standard stroke tables</i>
Fluido - Fluid	aria compressa filtrata, non lubrificata - <i>compressed filtered, non lubricated air</i>

CARATTERISTICHE COSTRUTTIVE - CONSTRUCTIVE CHARACTERISTICS

①	Stelo - Rod	acciaio inox AISI 303 - <i>stainless steel AISI 303</i>
② ⑪	Guarnizioni - Seals	poliuretano - <i>polyurethane</i>
③	Boccola - Bush	ottone - <i>brass</i>
④ ⑫	Testate - Covers	alluminio anodizzato - <i>anodized aluminium</i>
⑤	O-ring	NBR
⑥	Tubo - Tube	alluminio anodizzato - <i>anodized aluminium</i>
⑦	Paracolpo - Bumper	NBR
⑧	Pistone - Piston	alluminio - <i>aluminium</i>
⑨	Fascia di guida - Guide ring	PBT+PTFE
⑩	Magnete - Magnet	plastoferrite - <i>rubber magnet</i>
	Tiranti - Tie rods	acciaio - <i>steel</i>
	Viti - Screws	acciaio - <i>steel</i>
	Molla - Spring	acciaio - <i>steel</i>



CHIAVE DI CODIFICA

KEY CODE

K	D	M	2	0	0	.	1	0	0	.	G	S	.	F
			ALESAGGIO - BORE (Ø)		CORSA - STROKE (mm)			OPZIONE - OPTION						
			125 - 160 - 200 - 250		vedere tabelle corse std see std stroke tables			EX ATEX II 2GD c T4						
			VERSIONE - VERSION					STELO - ROD						
			P stelo passante double rod A con staffa antirotazione with anti-rotation bracket					F femmina female M maschio male						
			VERSIONE - VERSION					GUARNIZIONI - SEALS						
			M magnetico magnetic non magnetico non-magnetic					GS guarnizioni standard standard seals VR guarnizione stelo per alte temperature high temperature rod seal VA tutte le guarnizioni per alte temperature all seals for high temperature						
			VERSIONE - VERSION											
			S semplice effetto molla anteriore single acting front spring D doppio effetto double acting											
			SERIE - SERIES											
			K tubo tondo con tiranti round tube with tie rods											

SERIE

K

Cilindri tandem vedi pagina 200
Tandem cylinders see page 200

ESECUZIONI A RICHIESTA - ON REQUEST

Stelo forato - *Hollow rod*

Stelo prolungato (W) - *Extended rod (W)*

Filetti speciali (dado stelo non fornito) - *Special thread (without rod nut)*

ATEX II 2GD c T4

FORZE TEORICHE DI TRAZIONE (P=6bar)

THEORETICAL FORCES OF TRACTION (P=6bar)

		Ø	125	160	200	250
KD - KDM	SPINTA THRUST	[N]	7.363	12.064	18.850	29.452
	TRAZIONE TRACTION	[N]	6.940	11.310	18.095	28.700
KDP - KDMP	SPINTA THRUST	[N]	6.940	11.310	18.095	28.700
	TRAZIONE TRACTION	[N]	6.940	11.310	18.095	28.700

DIAGRAMMA TEORICO CARICO AMMISSIBILE

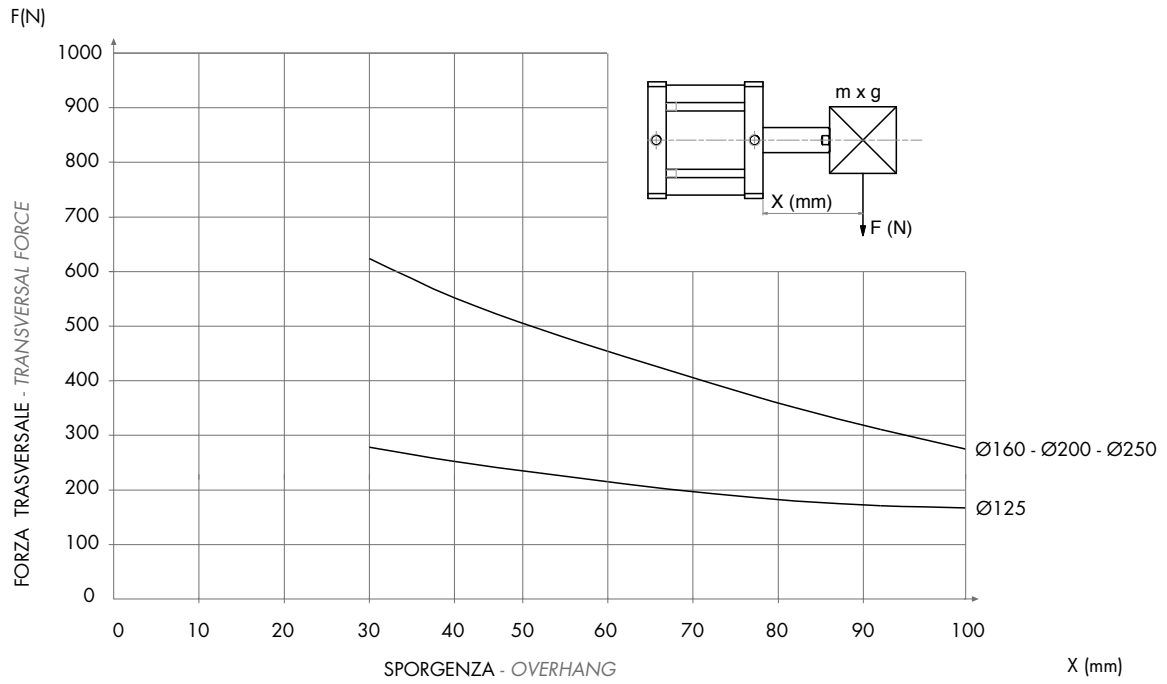
KS

KSM

KD

KDM

THEORETICAL ALLOWABLE LOAD



SERIE

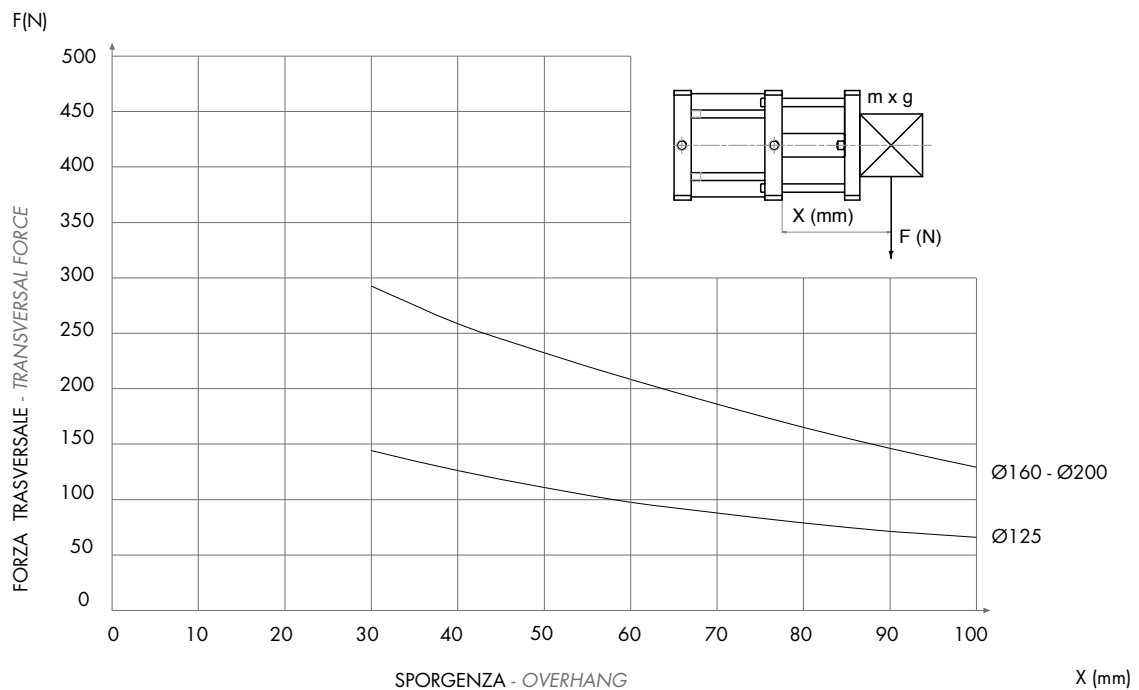
K

DIAGRAMMA TEORICO CARICO AMMISSIBILE

KDA

KDMA

THEORETICAL ALLOWABLE LOAD

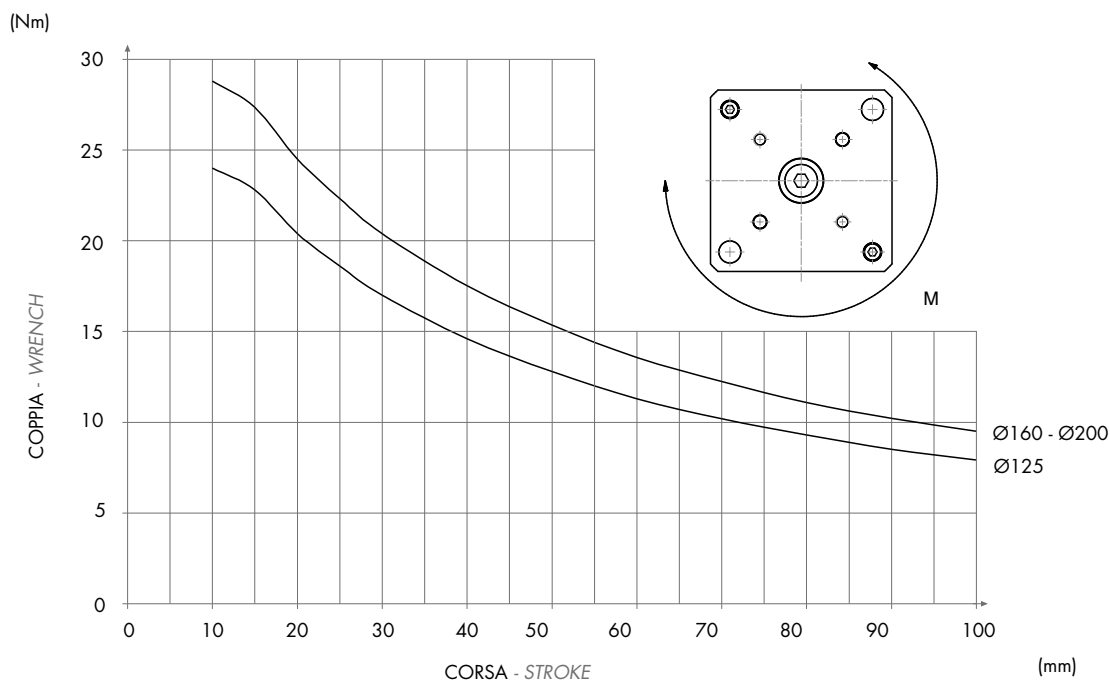


KDA

KDMA

DIAGRAMMA TEORICO COPPIA AMMISSIBILE

THEORETICAL ALLOWABLE TORQUE



KDP

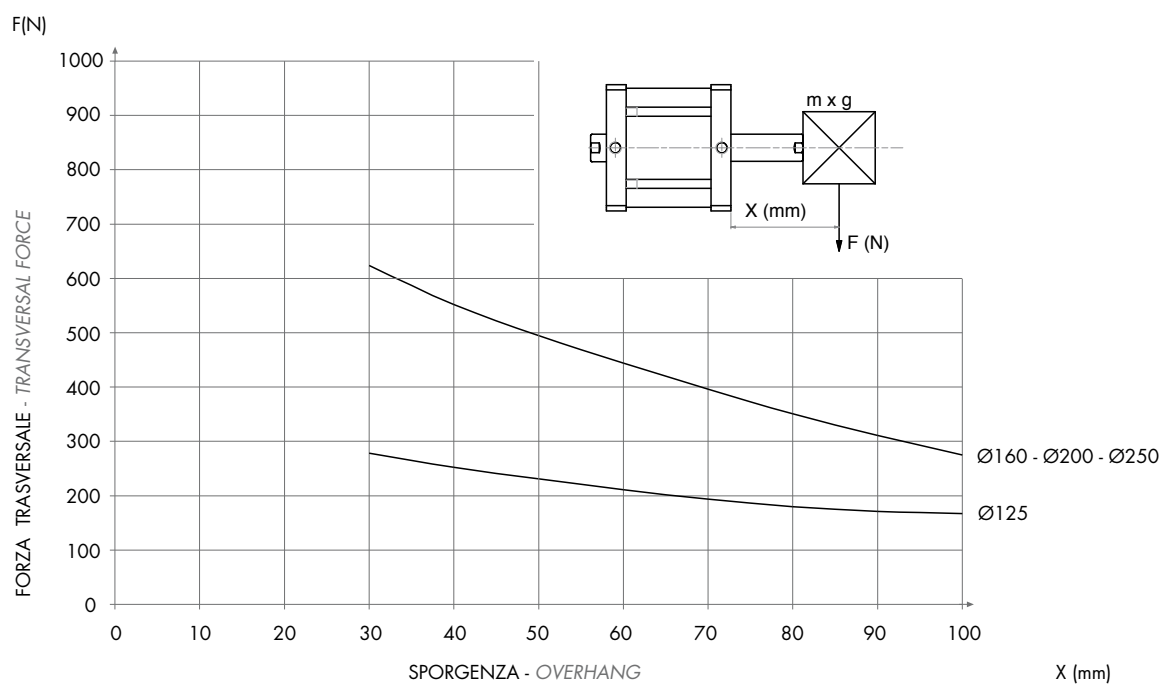
KDMP

SERIE

K

DIAGRAMMA TEORICO CARICO AMMISSIBILE

THEORETICAL ALLOWABLE LOAD

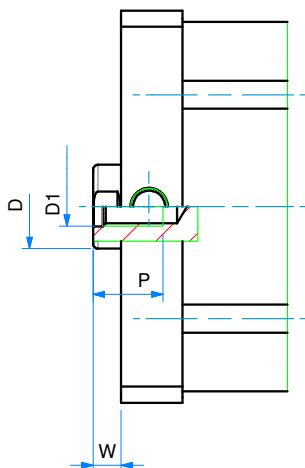
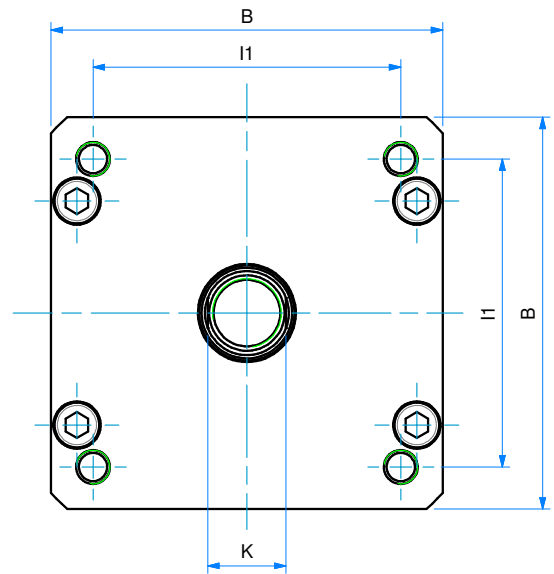
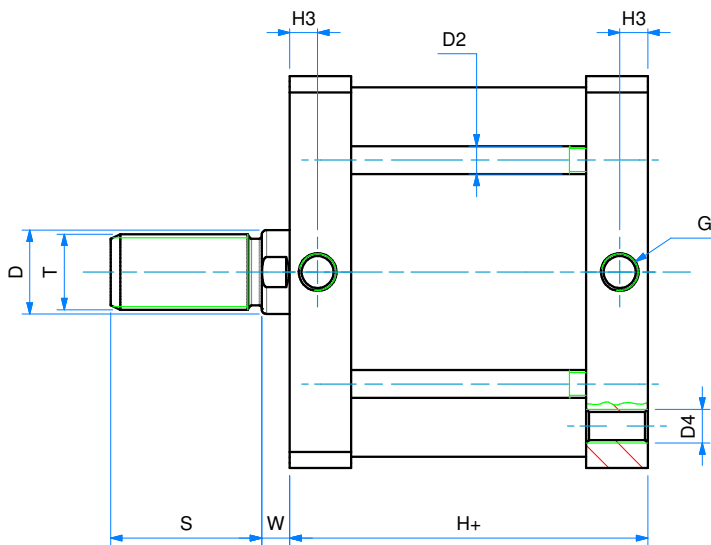
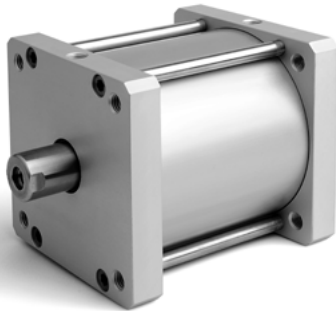
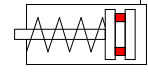
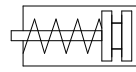


SEMPLICE EFFETTO (MAGNETICO) - MOLLA ANTERIORE

KS

KSM

SINGLE ACTING (MAGNETIC) - FRONT SPRING



SERIE
K

DIMENSIONI - DIMENSIONS

	125	160	200
B	140	180	220
ø D	30	40	40
D1	M14	M20	M20
ø D2	10	12	14
D4	M12	M16	M16
G	G1/4	G3/8	G3/8
H+	78	87	87
H+ viton	83	91	105
H3	10	12	12
I1	110	140	175
K	28	36	36
P	25	30	30
S	54	72	72
T	M27x2	M36x2	M36x2
W	10	12	12

ø	CORSE STANDARD - STANDARD STROKES
125	10 - 25 - 50
160	10 - 25 - 50
200	10 - 25 - 50

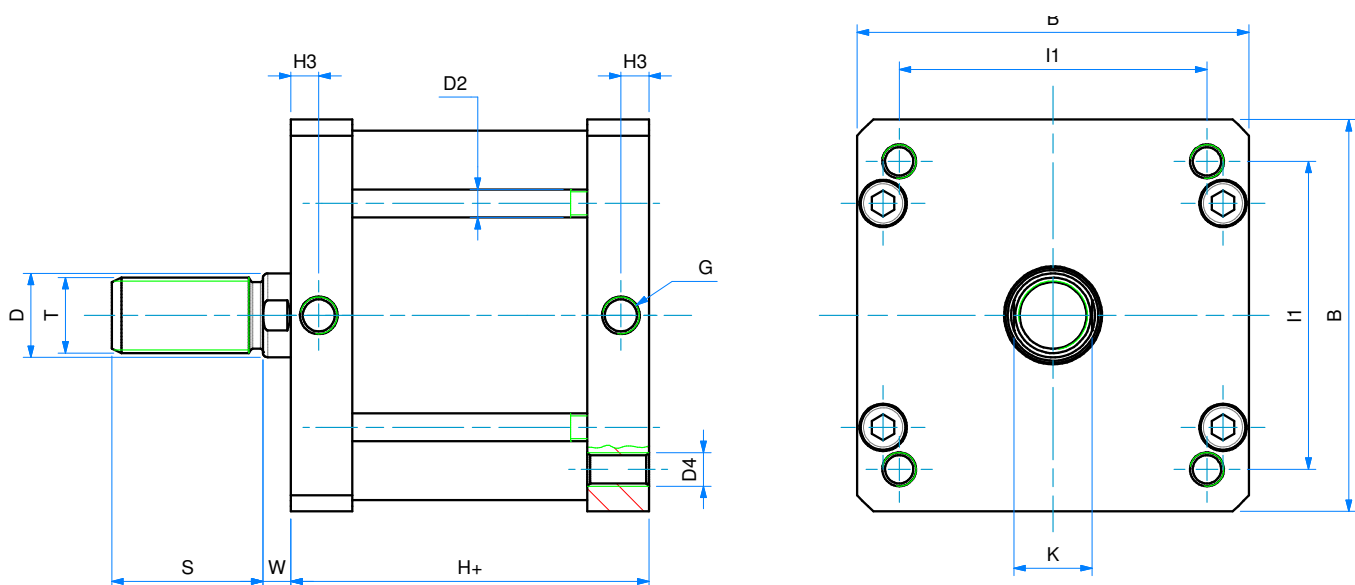
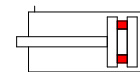
+ = aggiungere lunghezza corsa (mm) - add stroke length (mm)

DOPPIO EFFETTO (MAGNETICO)

KD

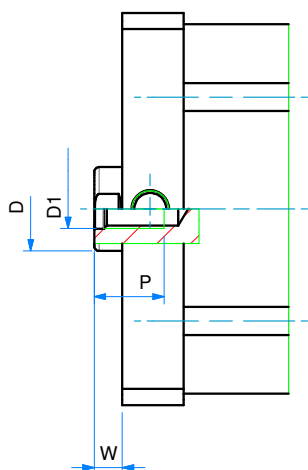
KDM

DOUBLE ACTING (MAGNETIC)



SERIE

K



DIMENSIONI - DIMENSIONS

	125	160	200	250
B	140	180	220	270
ø D	30	40	40	40
D1	M14	M20	M20	M24
ø D2	10	12	14	16
D4	M12	M16	M16	M20
G	G1/4	G3/8	G3/8	G1/2
H+	78	87	87	116
H + viton	83	91	105	116
H3	10	12	12	15
l1	110	140	175	220
K	28	36	36	36
P	25	30	30	35
S	54	72	72	72
T	M27x2	M36x2	M36x2	M36x2
W	10	12	12	12

ø	CORSE STANDARD - STANDARD STROKES
125	10 - 25 - 50 - 75 - 100 - 125 - 160 - 200 - 250 - 300
160	10 - 25 - 50 - 75 - 100 - 125 - 160 - 200 - 250 - 300
200	10 - 25 - 50 - 75 - 100 - 125 - 160 - 200 - 250 - 300
250	10 - 25 - 50 - 75 - 100 - 125 - 160 - 200 - 250 - 300

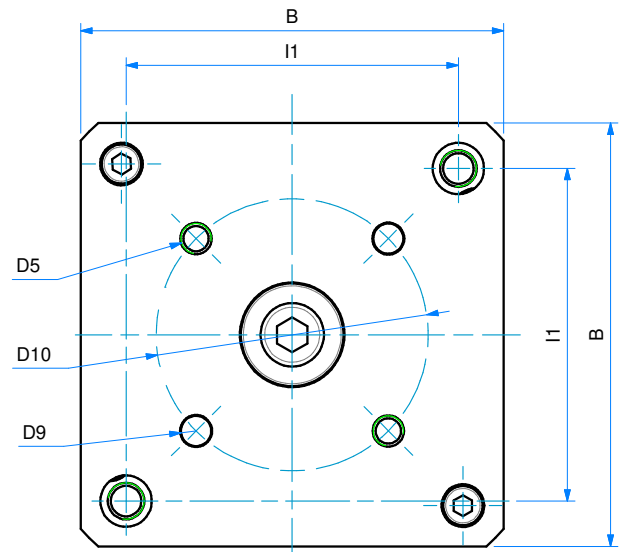
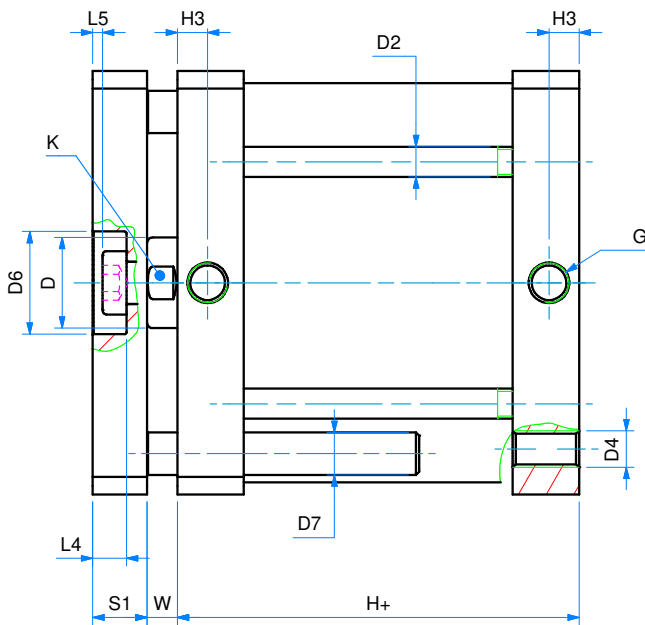
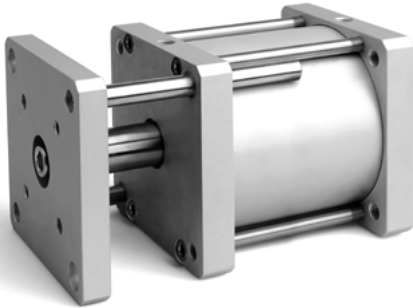
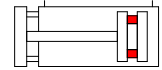
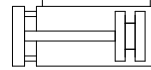
+ = aggiungere lunghezza corsa (mm) - add stroke length (mm)

DOPPIO EFFETTO (MAGNETICO) ANTIROTAZIONE

KDA

KDMA

DOUBLE ACTING (MAGNETIC) ANTI-ROTATION



SERIE
K

DIMENSIONI - DIMENSIONS

ø	125	160	200
B	140	180	220
ø D	30	40	40
D1	M14	M20	M20
ø D2	10	12	14
D4	M12	M16	M16
D5	M10	M12	M12
ø D6	34	46	46
ø D7	14	20	20
ø D9	10	12	12
ø D10	90	110	110
G	G1/4	G3/8	G3/8
H+	78	87	87
H + viton	83	91	105
H3	10	12	12
I1	110	140	175
K	28	36	36
L4	12	16	16
L5	3	3	3
S1	18	23	23
W	10	12	12

Ø CORSE STANDARD - STANDARD STROKES

125	10 - 25 - 50 - 75 - 100 - 125 - 160 - 200 - 250 - 300
160	10 - 25 - 50 - 75 - 100 - 125 - 160 - 200 - 250 - 300
200	10 - 25 - 50 - 75 - 100 - 125 - 160 - 200 - 250 - 300

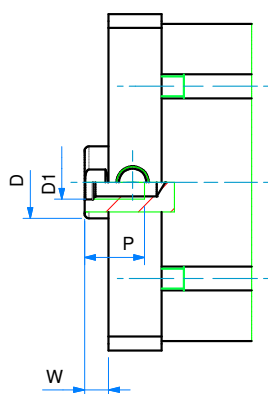
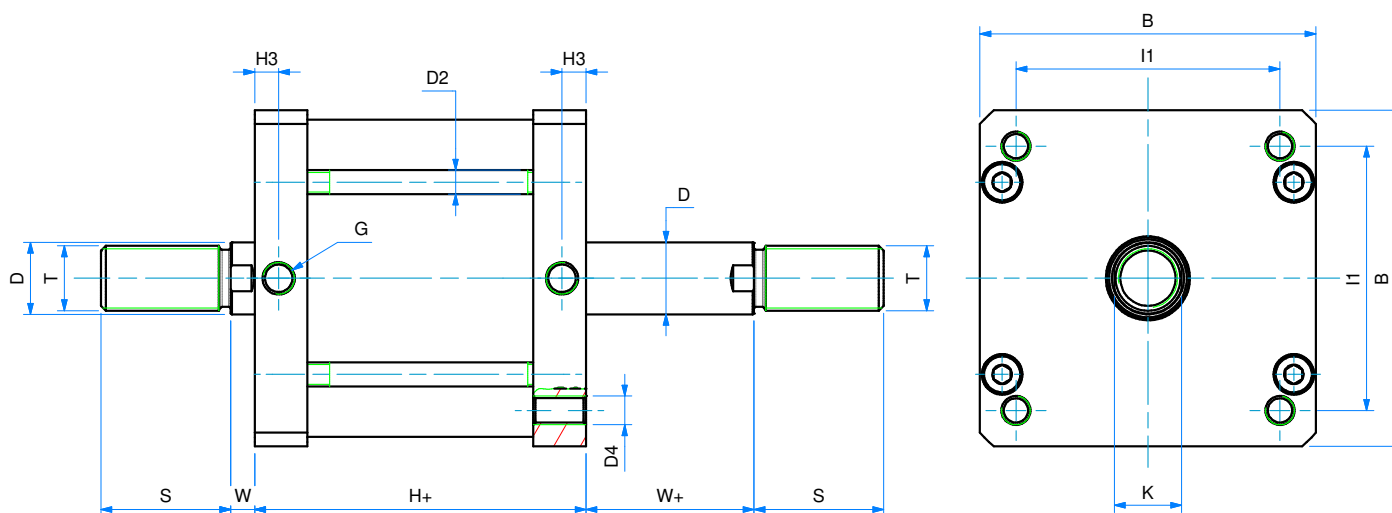
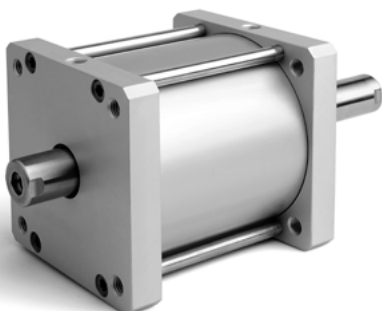
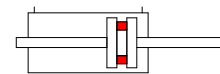
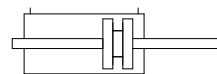
+ = aggiungere lunghezza corsa (mm) - add stroke length (mm)

DOPIO EFFETTO (MAGNETICO) STELO PASSANTE

KDP

KDMP

DOUBLE ACTING (MAGNETIC) WITH DOUBLE ROD



SERIE
K

DIMENSIONI - DIMENSIONS

	125	160	200	250
ø	125	160	200	250
B	140	180	220	270
ø D	30	40	40	40
D1	M14	M20	M20	M24
ø D2	10	12	14	16
D4	M12	M16	M16	M20
G	G1/4	G3/8	G3/8	G1/2
H+	78	87	87	116
H + viton	83	91	105	116
H3	10	12	12	15
I1	110	140	175	220
K	28	36	36	36
P	25	30	30	35
S	54	72	72	72
T	M27x2	M36x2	M36x2	M36x2
W	10	12	12	12
W+	10	12	12	12

ø	CORSE STANDARD - STANDARD STROKES
125	10 - 25 - 50 - 75 - 100 - 125 - 160 - 200 - 250 - 300
160	10 - 25 - 50 - 75 - 100 - 125 - 160 - 200 - 250 - 300
200	10 - 25 - 50 - 75 - 100 - 125 - 160 - 200 - 250 - 300
250	10 - 25 - 50 - 75 - 100 - 125 - 160 - 200 - 250 - 300

+ = aggiungere lunghezza corsa (mm) - add stroke length (mm)

CILINDRI TANDEM - TANDEM CYLINDERS

CHIAVE DI CODIFICA - KEY CODE

K T2 M 1 60 . 0 50 . GS . M

VERSIONE - VERSION

- T2** tandem doppia spinta
double thrust tandem
- T3** tandem tripla spinta
3 x force
- T4** tandem quadrupla spinta
4 x force

K C M 1 25 . 0 50 . 1 00 . GS . F

ALESAGGIO - BORE (Ø)
125 - 160 - 200 - 250

I° CORSA (mm)
I° STROKE (mm)
vedere tabelle corse std
see std stroke tables

II° CORSA (mm)
II° STROKE (mm)
vedere tabelle corse std
see std stroke tables

STELO - ROD
F femmina
female
M maschio
male

VERSIONE - VERSION

- M** magnetico
magnetic
- non magnetico
non-magnetic

VERSIONE - VERSION

- P** tandem più posizioni doppio effetto
multi-position double acting tandem
- C** tandem contrapposti posteriori doppio effetto
rear opposed double acting tandem
- F** tandem contrapposti anteriori doppio effetto
front opposed double acting tandem

GUARNIZIONI - SEALS

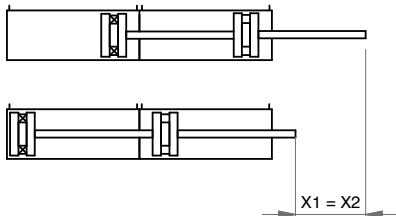
- GS** guarnizioni standard
standard seals
- VR** guarnizione stelo per alte temperature
high temperature rod seal
- VA** tutte le guarnizioni per alte temperature
all seals for high temperature

SERIE - SERIES

- K** tubo tondo con tiranti
round tube with tie rods

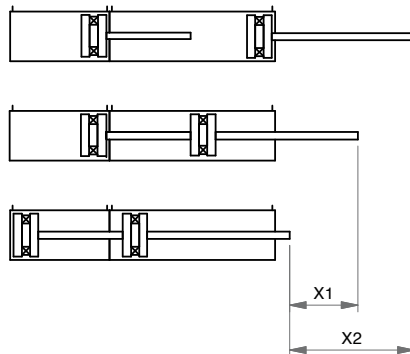
SERIE
K

DOPPIA SPINTA - DOUBLE THRUST

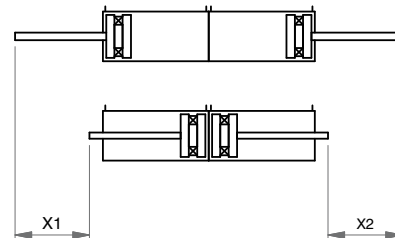


X1= 1° corsa - 1° stroke
X2= 2° corsa - 2° stroke

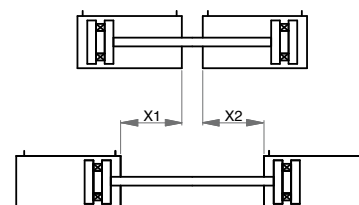
PIÙ POSIZIONI - MULTI-POSITIONS



CONTRAPPOSTI POSTERIORI - REAR OPPOSED



CONTRAPPOSTI ANTERIORI - FRONT OPPOSED

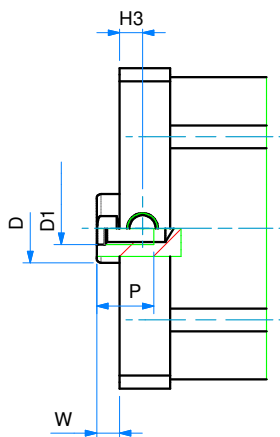
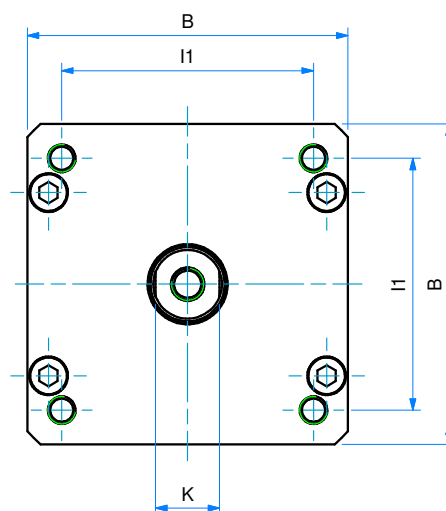
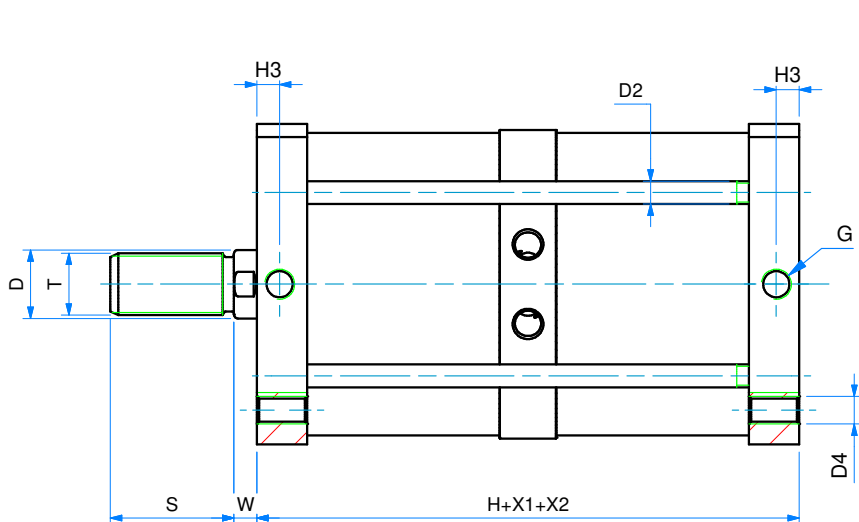
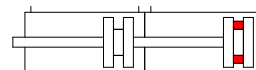
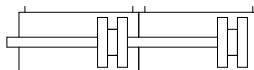


KT

KTM

TANDEM DOPPIA SPINTA D.E.(M)

DOUBLE THRUST TANDEM D.A.(M)



SERIE
K

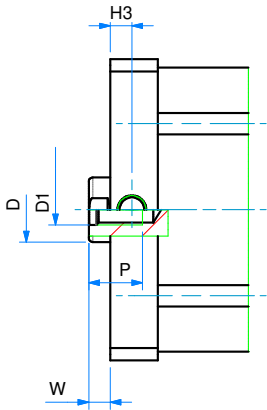
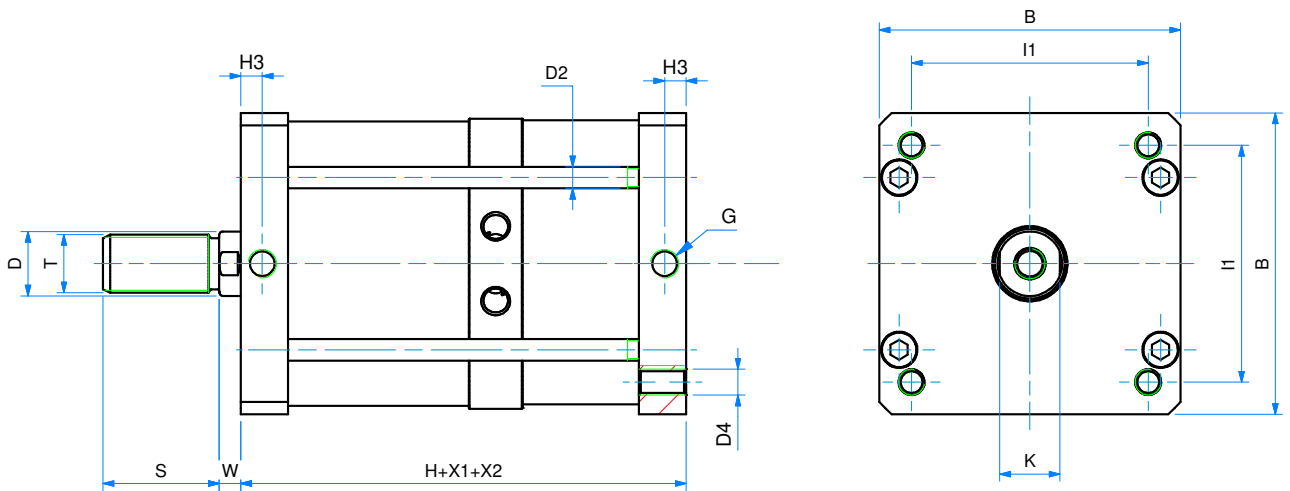
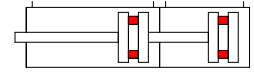
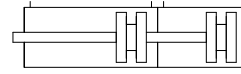
DIMENSIONI - DIMENSIONS				
ø	125	160	200	250
B	140	180	220	270
ø D	30	40	40	40
D1	M14	M20	M20	M24
ø D2	10	12	14	M16
D4	M12	M16	M16	M20
G	G1/4	G3/8	G3/8	G1/2
H	137	150	150	202
H viton	147	158	186	202
H3	10	12	12	15
I1	110	140	175	220
K	28	36	36	36
P	25	30	30	35
S	54	72	72	72
T	M27x2	M36x2	M36x2	M36x2
W	10	12	12	12
X1	I° CORSA I° STROKE	I° CORSA I° STROKE	I° CORSA I° STROKE	I° CORSA I° STROKE
X2	II° CORSA II° STROKE	II° CORSA II° STROKE	II° CORSA II° STROKE	II° CORSA II° STROKE

TANDEM PIÙ POSIZIONI D.E.(M)

KP

KPM

MULTI-POSITION TANDEM D.A.(M)



DIMENSIONI - DIMENSIONS

ø	125	160	200	250
B	140	180	220	270
ø D	30	40	40	40
D1	M14	M20	M20	M24
ø D2	10	12	14	M16
D4	M12	M16	M16	M20
G	G1/4	G3/8	G3/8	G1/2
H	137	150	150	202
H viton	137	150	150	202
H3	147	158	186	202
I1	110	140	175	220
K	28	36	36	36
P	25	30	30	35
S	54	72	72	72
T	M27x2	M36x2	M36x2	M36x2
W	10	12	12	12
X1	I° CORSA I° STROKE	I° CORSA I° STROKE	I° CORSA I° STROKE	I° CORSA I° STROKE
X2	II° CORSA II° STROKE	II° CORSA II° STROKE	II° CORSA II° STROKE	II° CORSA II° STROKE

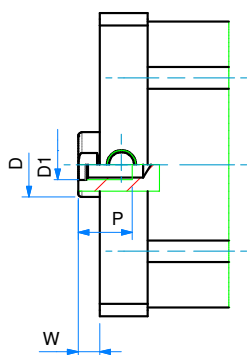
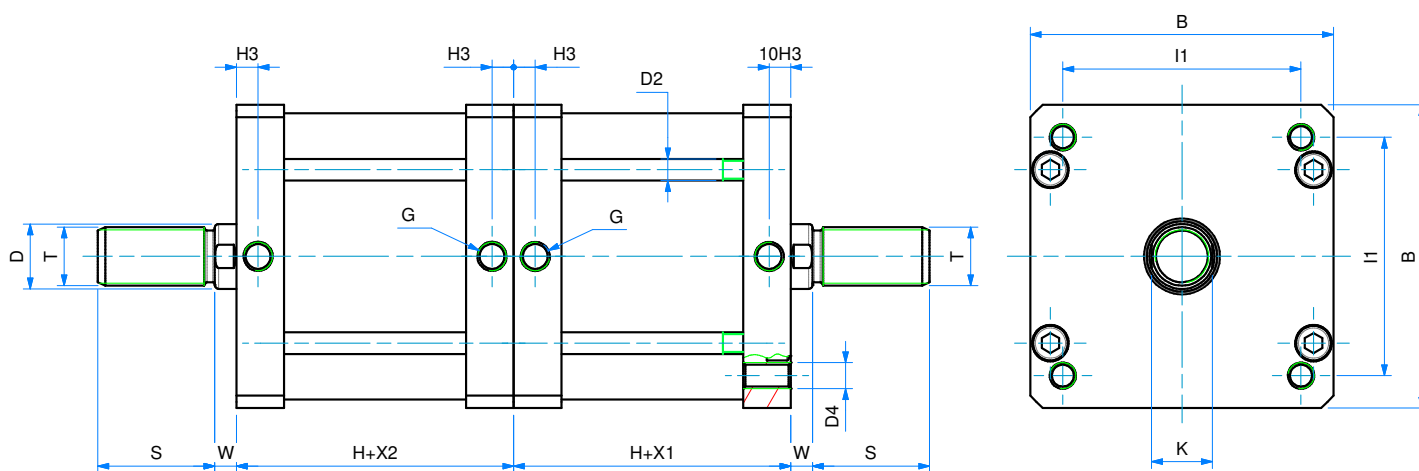
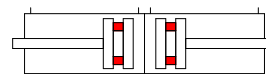
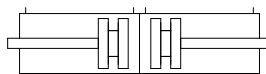
SERIE
K

TANDEM CONTRAPPOSTI POSTERIORI D.E.(M)

KC

KCM

REAR OPPOSED TANDEM D.A.(M)

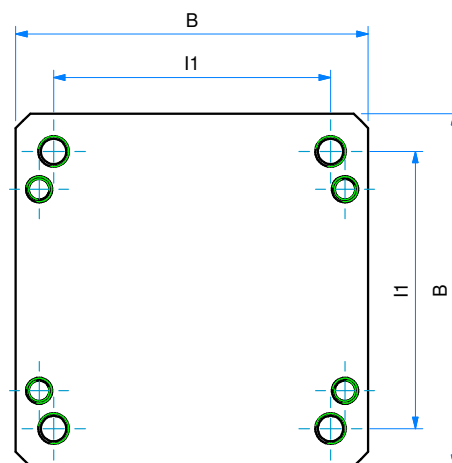
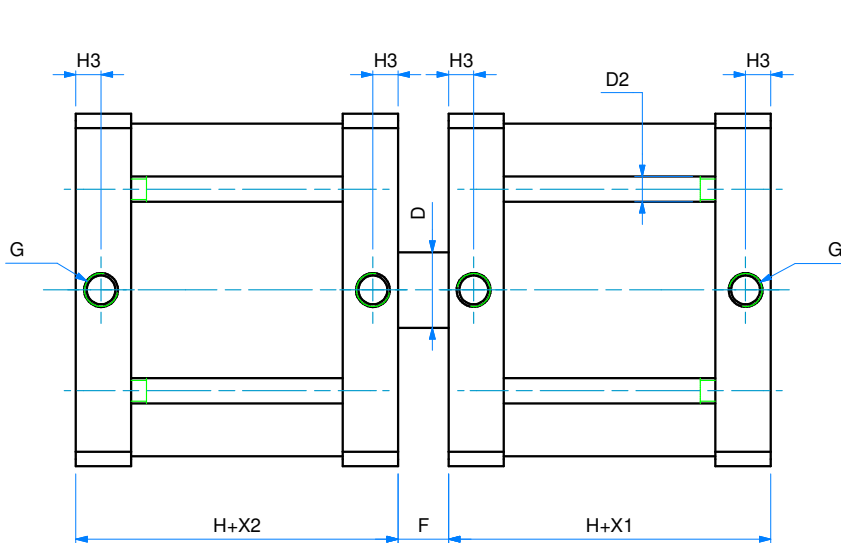
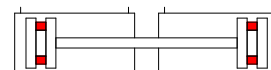
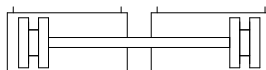


DIMENSIONI - DIMENSIONS

	125	160	200	250
B	140	180	220	270
ø D	30	40	40	40
D1	M14	M20	M20	M24
ø D2	10	20	14	M16
D4	M12	M16	M16	M20
G	G1/4	G3/8	G3/8	G1/2
H	78	87	87	116
H viton	83	91	105	116
H3	10	12	12	15
I1	110	140	175	220
K	28	36	36	36
P	25	30	30	35
S	54	72	72	72
T	M27x2	M36x2	M36x2	M36x2
W	10	12	12	12
X1	I° CORSA I° STROKE	I° CORSA I° STROKE	I° CORSA I° STROKE	I° CORSA I° STROKE
X2	II° CORSA II° STROKE	II° CORSA II° STROKE	II° CORSA II° STROKE	II° CORSA II° STROKE

SERIE

K

TANDEM CONTRAPPOSTI ANTERIORI D.E.(M)
FRONT OPPOSED TANDEM D.A.(M)


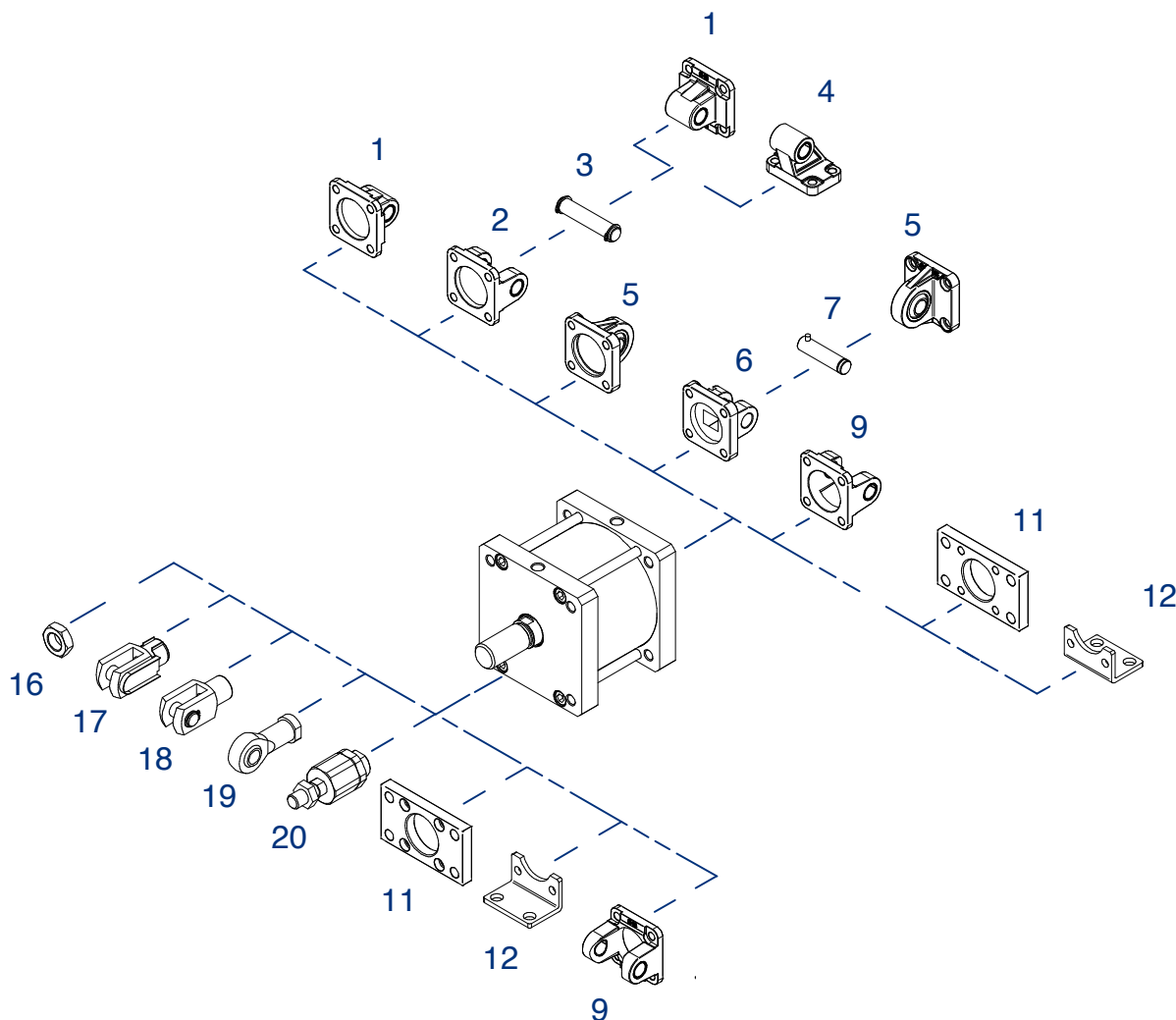
SERIE

K
DIMENSIONI - DIMENSIONS

\varnothing	125	160	200	250
B	140	180	220	270
\varnothing D	30	40	40	40
\varnothing D2	10	12	14	M16
D4	M12	M16	M16	M20
F	20	24	24	24
G	G1/4	G3/8	G3/8	G1/2
H	137	150	150	202
H viton	83	91	105	202
H3	10	12	12	15
I1	110	140	175	220
X1	I° CORSA I° STROKE	I° CORSA I° STROKE	I° CORSA I° STROKE	I° CORSA I° STROKE
X2	II° CORSA II° STROKE	II° CORSA II° STROKE	II° CORSA II° STROKE	II° CORSA II° STROKE

ACCESSORI DI FISSAGGIO ISO 15552 (UTILIZZABILI ANCHE PER CILINDRI SERIE K)

ISO 15552 MOUNTING PARTS (ALSO SUITABLE FOR SERIE K CYLINDERS)



SERIE
K

POS.	CODE	DESCRIZIONE-DESCRIPTION
1	CMI---	cerniera maschio iso - iso male hinge
2	CFI---	cerniera femmina iso - iso female hinge
3	PCF---	perno per cerniera - pin for hinge
4	ASI---	articolazione a squadra iso - iso square hinge
5	CMSI---	cerniera maschio snodata iso iso male hinge with ball joint
6	CFSI---	cerniera femmina stretta iso iso narrow female hinge
7	PCFS---	perno per cerniera stretta pin for narrow hinge
9	CFI--F	cerniera femmina forata iso hollow iso female hinge
11	FI---	flangia iso - iso flange
12	PBI---	piedino basso iso - iso foot mounting

POS.	CODE	DESCRIZIONE-DESCRIPTION
16	DA--x---	dado - nut
17	FC--x---	forcella con clips - clevis with lockable pin
18	FP--x---	forcella con perno - clevis with pin
19	SSFI--x---	snodo sferico - rod eye
20	SA--x---	snodo autoallineante - self-aligning joint

Fissaggi forniti con viti - Mounting parts supplied with screws

Dimensioni accessori: vedi sezione SERIE W
Accessories dimensions: see SERIE W chapter